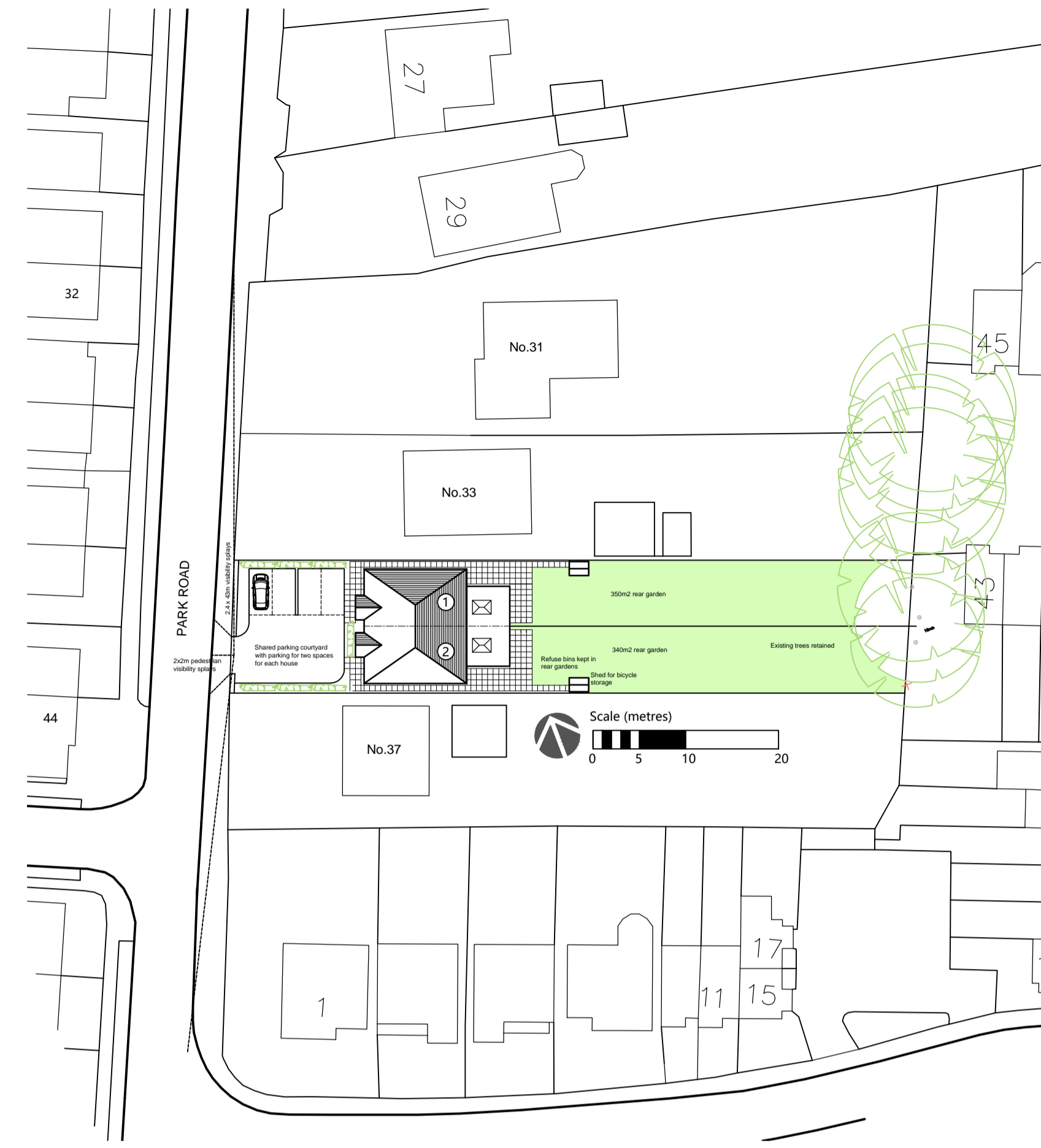
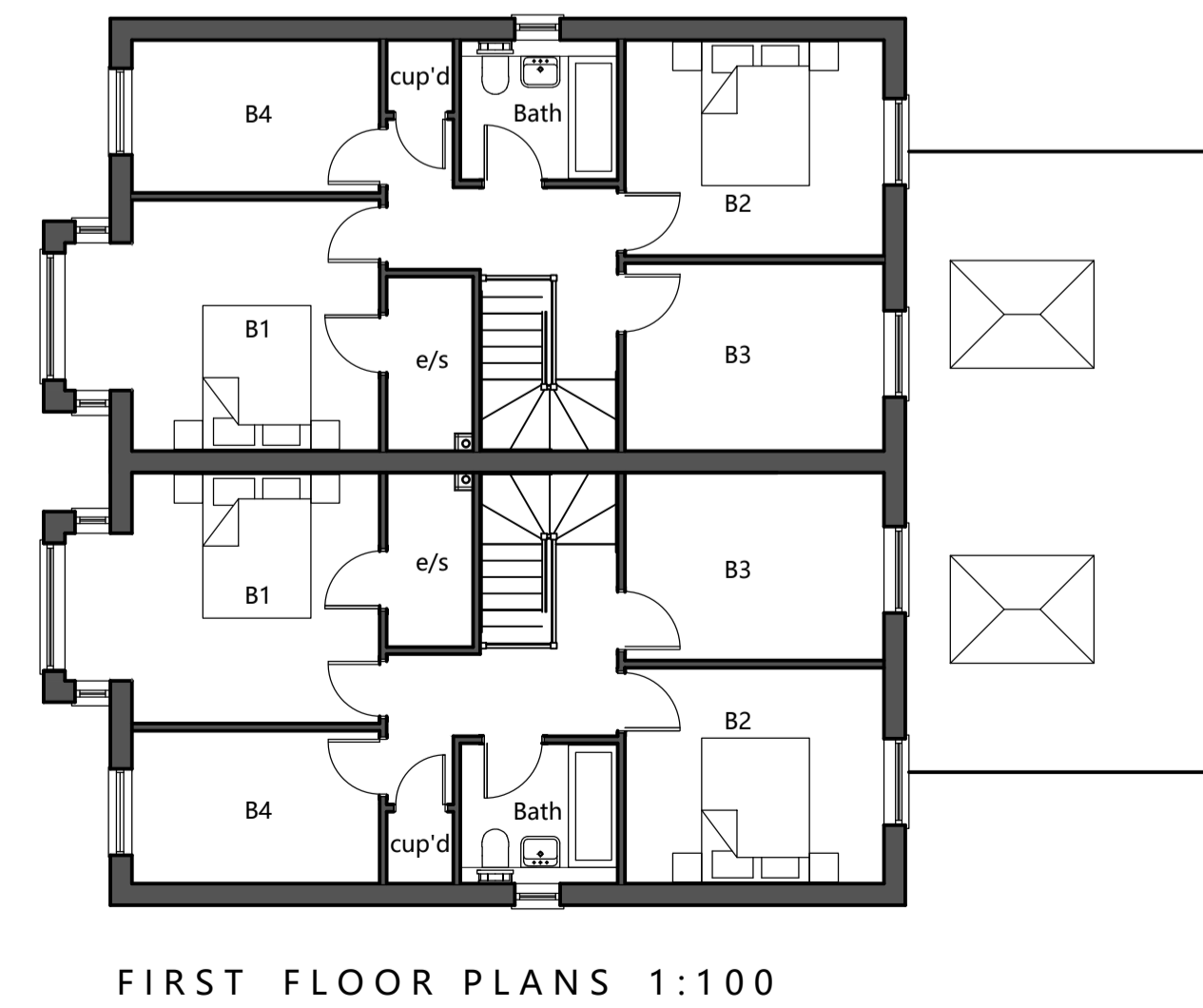
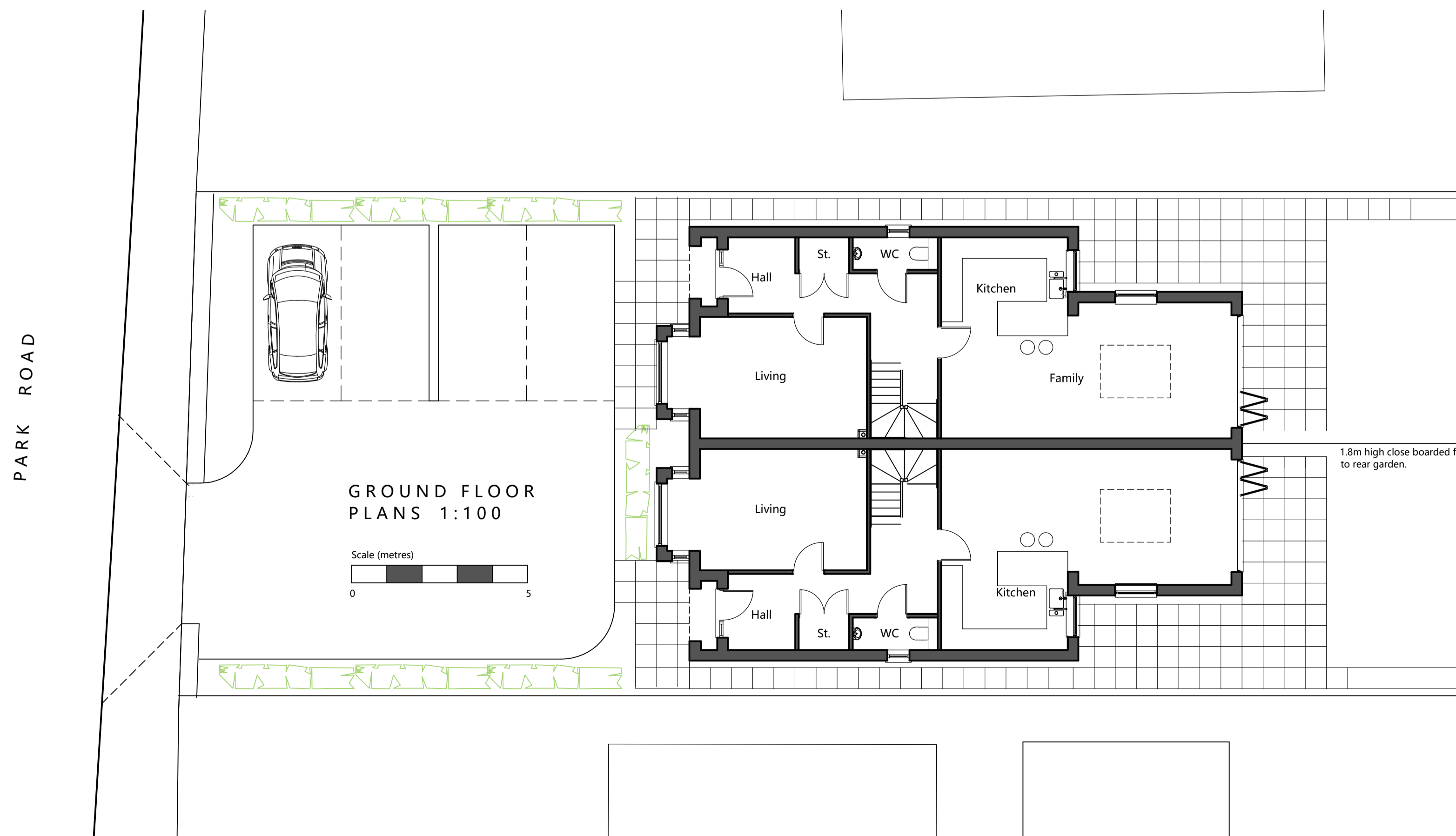
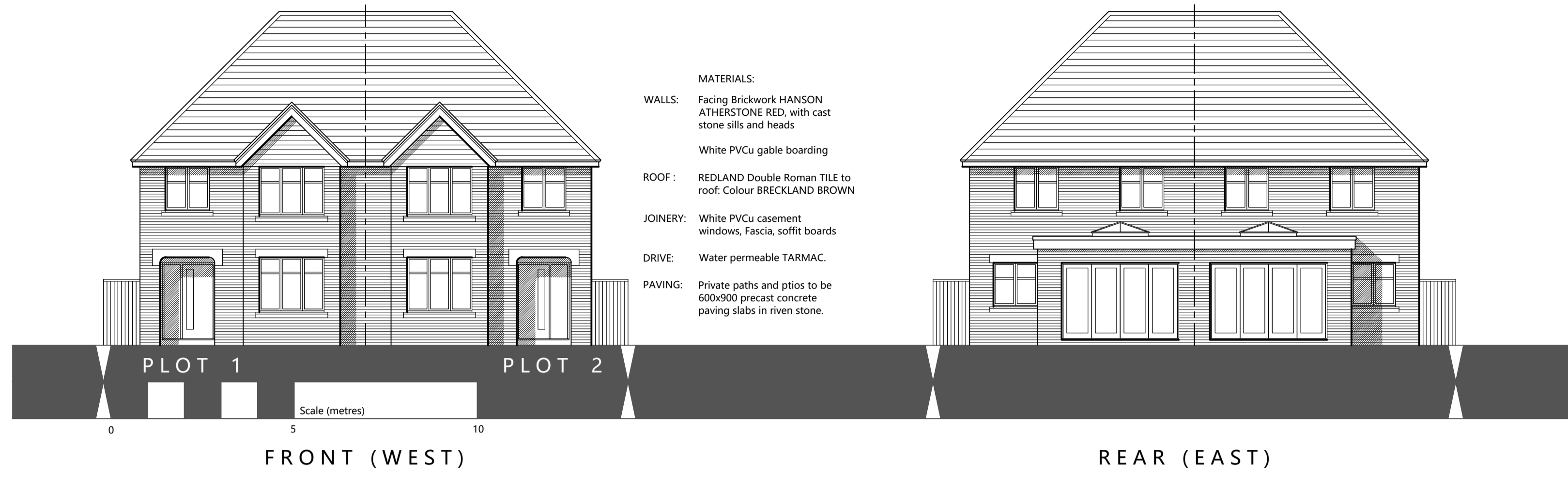


K. L. SKALKA
ARCHITECTS Ltd

Unit C7, Didcot Enterprise Centre
Southmead Park
Didcot, Oxon OX11 7PH
Tel/Fax: 01235-510813
www.kls-architects.co.uk

35 Park Road, Didcot, OX11 8BU
Site Location Plan (PRD.P10) 1:1250@A4.

Appendix 2



K. L. SKALKA
ARCHITECTS Ltd

Unit C7, Didcot Enterprise Centre
 Southmead Park
 Didcot, Oxon OX11 7PH
 Tel: 01235-510813

Revisions
 A: 03.07.18: Parking and access amended

TOTAL LAND & PROPERTY
DEVELOPMENTS Ltd
 31 Foxhall Road
 Didcot OX11 7AQ

Project
REDEVELOPMENT
 at
35 PARK ROAD
DIDCOT OX11 8QL

Pair of semi-detached houses.
 Site Layout, Floor Plans and Elevations

Scale: 1:100, 1:500 Revision
 Date: March 2018 **A**

Drawing No. **PRD.11**